



# YBA-10

*Bluetooth Wireless Audio Receiver*  
*Récepteur Audio Sans Fil Bluetooth*  
Bluetooth ワイヤレス オーディオ レシーバー

OWNER'S MANUAL  
MODE D'EMPLOI  
BEDIENUNGSANLEITUNG  
BRUKSANVISNING  
MANUALE DI ISTRUZIONI  
MANUAL DE INSTRUCCIONES  
GEBRUIKSAANWIJZING  
ИНСТРУКЦИЯ ПО ЭКСПЛУАТАЦИИ  
使用说明书  
사용 설명서  
取扱説明書

English

Français

Deutsch

Svenska

Italiano

Español

Nederlands

Русский

中文

한국어

日本語

## FCC INFORMATION (for US customers)

### 1 **IMPORTANT NOTICE : DO NOT MODIFY THIS UNIT!**

This product, when installed as indicated in the instructions contained in this manual, meets FCC requirements. Modifications not expressly approved by Yamaha may void your authority, granted by the FCC, to use the product.

### 2 **IMPORTANT :** When connecting this product to accessories and/or another product use only high quality shielded cables. Cable/s supplied with this product **MUST** be used. Follow all installation instructions. Failure to follow instructions could void your FCC authorization to use this product in the USA.

### 3 **NOTE :** This product has been tested and found to comply with the requirements listed in FCC Regulations, Part 15 for Class "B" digital devices. Compliance with these requirements provides a reasonable level of assurance that your use of this product in a residential environment will not result in harmful interference with other electronic devices.

This equipment generates/uses radio frequencies and, if not installed and used according to the instructions found in the users manual, may cause interference harmful to the operation of other electronic devices.

Compliance with FCC regulations does not guarantee that interference will not occur in all installations. If this product is found to be the source of interference, which can be determined by turning the unit "OFF" and "ON", please try to eliminate the problem by using one of the following measures:

Relocate either this product or the device that is being affected by the interference.

Utilize power outlets that are on different branch (circuit breaker or fuse) circuits or install AC line filter/s.

In the case of radio or TV interference, relocate/reorient the antenna. If the antenna lead-in is 300 ohm ribbon lead, change the lead-in to coaxial type cable. If these corrective measures do not produce satisfactory results, please contact the local retailer authorized to distribute this type of product. If you can not locate the appropriate retailer, please contact Yamaha Electronics Corp., U.S.A. 6660 Orangethorpe Ave, Buena Park, CA 90620.

The above statements apply **ONLY** to those products distributed by Yamaha Corporation of America or its subsidiaries.

## COMPLIANCE INFORMATION STATEMENT

This device complies with Part 15 of the FCC Rules.

Operation is subject to the following two conditions:

- 1) this device may not cause harmful interference, and
- 2) this device must accept any interference received including interference that may cause undesired operation of this device.

See user manual instructions if interference to radio reception is suspected.

This equipment complies with FCC/IC radiation exposure limits set forth for uncontrolled equipment and meets the FCC radio frequency (RF) Exposure Guidelines in Supplement C to OET65 and RSS-102 of the IC radio frequency (RF) Exposure rules. This equipment has very low levels of RF energy that it deemed to comply without maximum permissive exposure evaluation (MPE). But it is desirable that it should be installed and operated with at least 20 cm and more between the radiator and person's body (excluding extremities: hands, wrists, feet and ankles).

#### **NOTICE**

This equipment has been tested and found to comply with the limits for a Class B digital device, pursuant to part 15 of the FCC Rules. These limits are designed to provide reasonable protection against harmful interference in a residential installation.

This equipment generates, uses and can radiate radio frequency energy and, if not installed and used in accordance with the instructions, may cause harmful interference to radio communications. However, there is no guarantee that interference will not occur in a particular installation. If this equipment does cause harmful interference to radio or television reception, which can be determined by turning the equipment off and on, the user is encouraged to try to correct the interference by one or more of the following measures:

- Reorient or relocate the receiving antenna.
- Increase the separation between the equipment and receiver.
- Connect the equipment into an outlet on a circuit different from that to which the receiver is connected.
- Consult the dealer or an experienced radio/TV technician for help.

#### **FCC WARNING**

Change or modifications not expressly approved by the party responsible for compliance could void the user's authority to operate the equipment.

This transmitter must not be co-located or operated in conjunction with any other antenna or transmitter.

## ■ Precautions

### Read this before using this unit.

To assure the finest performance, please read this manual carefully. Keep it in a safe place for future reference.

- 1 Install this unit in a cool, dry, clean place away from direct sunlight, heat sources, and sources of excessive vibration, dust, moisture, and/or cold. (Do not use/keep this unit in a car etc.)
- 2 Locate this unit away from other electrical appliances, motors, or transformers to avoid humming sounds.
- 3 Do not expose this unit to sudden temperature changes from cold to hot, and do not locate this unit in an environment with high humidity (i.e. a room with a humidifier) to prevent condensation inside this unit, which may cause an electrical shock, fire, damage to this unit, and/or personal injury.
- 4 Do not clean this unit with chemical solvents; this might damage the finish. Use a clean, dry cloth.
- 5 Do not attempt to modify or fix this unit. Contact qualified Yamaha service personnel when any service is needed. The cabinet should never be opened for any reason.
- 6 Be sure to read the “Troubleshooting” section regarding common operating errors before concluding that the unit is faulty.

If there should be color blotching or noise when used near a TV, move this unit away from the TV when using it.

Do not use this unit within 22 cm (9 inches) of persons with a heart pacemaker implant or defibrillator implant.

We, the manufacturer Yamaha hereby declare that the YBA-10 is in compliance with the essential requirements and other relevant provisions of Directive 1999/5/EC.

The user shall not reverse engineer, decompile, alter, translate or disassemble the software used in this unit, whether in part or in whole. For corporate users, employees of the corporation itself as well as its business partners shall observe the contractual bans stipulated within this clause. If the stipulations of this clause and this contract cannot be observed, the user shall immediately discontinue using the software.



This symbol mark is according to the EU directive 2002/96/EC.

This symbol mark means that electrical and electronic equipment, at their end-of-life, should be disposed of separately from your household waste.

Please act according to your local rules and do not dispose of your old products with your normal household waste.

## ■ Introduction

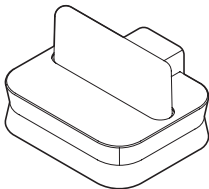
We greatly appreciate your purchase of this Yamaha product.

This product is an adapter for wireless connection of a Bluetooth-compatible device. It allows you to enjoy the audio stored on a Bluetooth-compatible portable music player or mobile phone with clarity and high sound quality.

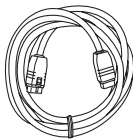
## ■ Checking the package contents

Check that the following items are included in the package.

### YBA-10 (Main unit)

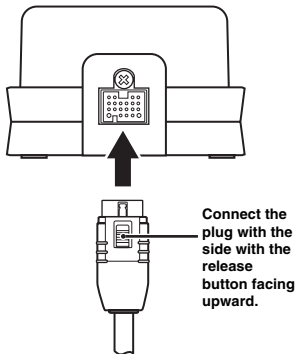


### Dock cable (2 m / 6.5 ft)



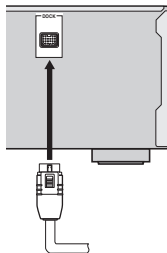
## ■ Connecting the dock cable

- 1 Connect one of the plugs of the dock cable to the dock cable terminal of this unit firmly.



- 2 Make sure the power of the YBA-10 compatible component (AV receiver, etc.) is turned off.

- 3 Connect the other plug of the dock cable to the DOCK terminal of the YBA-10 compatible component (AV receiver, etc.).



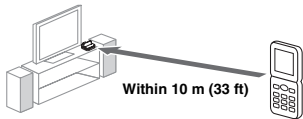
### Notes

- Be sure to connect the plugs of the dock cable firmly to both the dock cable terminal of this unit and the DOCK terminal of the YBA-10 compatible component (AV receiver, etc.). When the connection is loose, this unit may output some unwanted noise.
- The YBA-10 is not compatible with all AV receivers or other components, even those equipped with DOCK terminals. For details, see the owner's manual of your DOCK terminal-equipped components.

## ■ Installation

Install in a stable place, being careful of the following points:

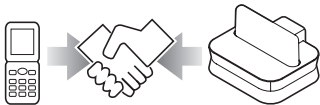
- Do not place on top of steel or other metal plates.
- Do not cover with a cloth, etc.
- Install in the same room as the device with which signals are to be exchanged (Bluetooth profile A2DP or AVRCP-compatible portable music player, mobile phone, etc.) within a direct, line-of-sight distance of 10 m (33 ft).
- Make sure there are no obstacles between this unit and the other device.



## ■ Pairing

Pairing must be performed when making Bluetooth connections for the first time or if the pairing information has been deleted. Pairing refers to the operation of registering the device with which signals are to be exchanged (Bluetooth profile A2DP or AVRCP-compatible portable music player, mobile phone, etc.) on this unit.

For pairing, see the operating instructions of the YBA-10 compatible component (AV receiver, etc.) to which YBA-10 is connected.

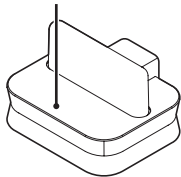


### Notes

- This unit can be paired with up to eight other components. When pairing is conducted successfully with a ninth component and the pairing data is registered, the pairing data for the least recently used other component is cleared.
- This unit is compatible with the Bluetooth A2DP (Advanced Audio Distribution Profile) and AVRCP (Audio and Video Remote Control Profile) profiles, but depending on the type of AV receiver connected to this unit and the Bluetooth-compatible player you are using, it may not be possible to use all of the AVRCP control functions.

## ■ About the status indicator

Status indicator

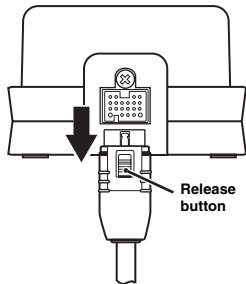


The status indicator lights or flashes as shown below to indicate the dock's operating status.

Component status	Indicator
Power off	Off
Power on	Off
During pairing	Flashing
During playback	Lights up

## ■ Disconnecting the dock cable

- 1 Make sure the power of the component to which the YBA-10 compatible is connected is turned off.
- 2 Press and hold the release button and then pull off the plug of the dock cable.





## ■ Troubleshooting

Check the following if this unit should not be operating properly (if noise is output or if the unit malfunctions):

Cause	Remedy
Incomplete connection	Check the connection of the YBA-10 compatible component (AV receiver, etc.) and dock connection cable.
	Check the connection of this unit and dock connection cable.
The device with which you are trying to exchange signals is not compatible with A2DP or AVRCP.	Use an A2DP or AVRCP-compatible device.
The device with which you are trying to exchange signals and this unit are too far apart.	Install in the same room within a line-of-sight distance of 10 m (33 ft) and with no obstacles.
There is an obstacle between the device with which you are trying to exchange signals and this unit.	
There is a device emitting electromagnetic waves in the 2.4 GHz band nearby (microwave oven, wireless LAN device, etc.).	Move this unit away from the device.
Pairing has not been properly performed.	Refer to the operating instructions of the YBA-10 compatible component (AV receiver, etc.) and perform the pairing operation over.
The device with which you are trying to communicate is not sending Bluetooth signals to this unit.	Check whether the device with which you are trying to communicate is properly set.

## ■ Specifications

Bluetooth .....	Ver. 2.0+EDR Support A2DP/AVRCP profile
Frequency band .....	2.4 GHz
Maximum communications distance (line-of-sight distance with no obstacles).....	10 m (33 ft)
Dimensions (W x H x D).....	80 x 50 x 70 mm (3-1/8" x 1-15/16" x 2-3/4")
Weight .....	153 g (5 oz.)

Please note that all specifications are subject to change without notice.

### Bluetooth™

- Bluetooth is a technology for wireless communication between devices within an area of about 10 meters (33 ft) employing the 2.4 GHz frequency band, a band which can be used without a license.
- Bluetooth is a registered trademark of the Bluetooth SIG and is used by Yamaha in accordance with a license agreement.

### Handling Bluetooth communications

- The 2.4 GHz band used by Bluetooth compatible devices is a radio band shared by many types of equipment. While Bluetooth compatible devices use a technology minimizing the influence of other components using the same radio band, such influence may reduce the speed or distance of communications and in some cases interrupt communications.
- The speed of signal transfer and the distance at which communication is possible differs according to the distance between the communicating devices, the presence of obstacles, radio wave conditions and the type of equipment.
- Yamaha does not guarantee all wireless connections between this unit and devices compatible with Bluetooth function

## Limited Guarantee for European Economic Area (EEA) and Switzerland

Thank you for having chosen a Yamaha product. In the unlikely event that your Yamaha product needs guarantee service, please contact the dealer from whom it was purchased. If you experience any difficulty, please contact Yamaha representative office in your country. You can find full details on our website (<http://www.yamaha-hifi.com/> or <http://www.yamaha-uk.com/> for U.K. resident).

The product is guaranteed to be free from defects in workmanship or materials for a period of two years from the date of the original purchase. Yamaha undertakes, subject to the conditions listed below, to have the faulty product or any part(s) repaired, or replaced at Yamaha's discretion, without any charge for parts or labour. Yamaha reserves the right to replace a product with that of a similar kind and/or value and condition, where a model has been discontinued or is considered uneconomic to repair.

### Conditions

1. The original invoice or sales receipt (showing date of purchase, product code and dealer's name) MUST accompany the defective product, along with a statement detailing the fault. In the absence of this clear proof of purchase, Yamaha reserves the right to refuse to provide free of charge service and the product may be returned at the customer's expense.
2. The product MUST have been purchased from an AUTHORISED Yamaha dealer within the European Economic Area (EEA) or Switzerland.
3. The product must not have been the subject of any modifications or alterations, unless authorised in writing by Yamaha.
4. The following are excluded from this guarantee:
  - a. Periodic maintenance and repair or replacement of parts due to normal wear and tear.
  - b. Damage resulting from:
    - (1) Repairs performed by the customer himself or by an unauthorised third party.
    - (2) Inadequate packaging or mishandling, when the product is in transit from the customer. Please note that it is the customer's responsibility to ensure the product is adequately packaged when returning the product for repair.
    - (3) Misuse, including but not limited to (a) failure to use the product for its normal purpose or in accordance with Yamaha's instructions on the proper use, maintenance and storage, and (b) installation or use of the product in a manner inconsistent with the technical or safety standards in force in the country where it is used.
    - (4) Accidents, lightning, water, fire, improper ventilation, battery leakage or any cause beyond Yamaha's control.
    - (5) Defects of the system into which this product is incorporated and/or incompatibility with third party products.
    - (6) Use of a product imported into the EEA and/or Switzerland, not by Yamaha, where that product does not conform to the technical or safety standards of the country of use and/or to the standard specification of a product sold by Yamaha in the EEA and/or Switzerland.
    - (7) Non AV (Audio Visual) related products.  
(Products subject to "Yamaha AV Guarantee Statement" are defined in our website at <http://www.yamaha-hifi.com/> or <http://www.yamaha-uk.com/> for U.K. resident.)
5. Where the guarantee differs between the country of purchase and the country of use of the product, the guarantee of the country of use shall apply.
6. Yamaha may not be held responsible for any losses or damages, whether direct, consequential or otherwise, save for the repair or replacement of the product.
7. Please backup any custom settings or data, as Yamaha may not be held responsible for any alteration or loss to such settings or data.
8. This guarantee does not affect the consumer's statutory rights under applicable national laws in force or the consumer's rights against the dealer arising from their sales/purchase contract.



© 2008 YAMAHA CORPORATION All rights reserved.

**YAMAHA ELECTRONICS CORPORATION, USA** 6660 ORANGETHORPE AVE., BUENA PARK, CALIF. 90620, U.S.A.  
**YAMAHA CANADA MUSIC LTD.** 135 MILNER AVE., SCARBOROUGH, ONTARIO M1S 3R1, CANADA  
**YAMAHA ELECTRONIK EUROPA G.m.b.H.** SIEMENSSTR. 22-34, 25462 RELLINGEN BEI HAMBURG, GERMANY  
**YAMAHA ELECTRONIQUE FRANCE S.A.** RUE AMBROISE CROIZAT BP70 CROISSY-BEAUBOURG 77312 MARNE-LA-VALLEE CEDEX02, FRANCE  
**YAMAHA ELECTRONICS (UK) LTD.** YAMAHA HOUSE, 200 RICKMANSWORTH ROAD WATFORD, HERTS WD18 7GQ, ENGLAND  
**YAMAHA SCANDINAVIA A.B.** J A WETTERGRENS GATA 1, BOX 30053, 400 43 VÄSTRA FRÖLUNDA, SWEDEN  
**YAMAHA MUSIC AUSTRALIA PTY. LTD.** LEVEL 1, 99 QUEENSBIDGE STREET, SOUTHBANK, VIC 3006, AUSTRALIA  
야마하 뮤직 코리아 (주) 서울특별시 강남구 삼성동 158-9 동성빌딩 8F/9F  
ヤマハ株式会社 〒430-8650 静岡県浜松市中区中沢町 10-1

**YAMAHA CORPORATION**  
Printed in China ◀ WN89950