

FIRMWARE UPDATING PROCEDURE

! IMPORTANT NOTICE

Do not attempt to update your Yamaha receiver using any other data file except those provided directly from the Yamaha website or through your network connection.

Follow the instructions carefully and do not attempt any other procedures not specified in the instructions provided by Yamaha.

Improperly updated products may cause improper operation, and any parts or service required to restore proper operation will not be covered under the Yamaha Limited Warranty.

Choose from the following 2 methods to update to the latest firmware.

Click here for [Firmware Update Through the Internet](#)

(Connection to the Internet is required)

Click here for [Firmware Update by USB](#)

(A USB thumb drive is required)

In case of error, see the [Troubleshooting](#) section

Firmware Update Through the Internet

Requirement: Internet connection

Your receiver is connected to the Internet if you can receive Internet radio stations.

(See owner's manual for details)

1 Power off the receiver (Standby mode)

2 Enter the ADVANCED SETUP mode

While pressing the **STRAIGHT** key, press the **MAIN ZONE**  key and keep **STRAIGHT** key pressed until "ADVANCED SETUP" appears on the front panel display.

* "ADVANCED SETUP" is displayed only for a few seconds.



3 Select "FIRM UPDATE" from the menu

a. Press the **PROGRAM** key until "FIRM UPDATE USB" is displayed.

b. Then, press **STRAIGHT** key until "NETWORK" is displayed.



4 Start firmware update

a. Press **INFO** key to start the update.

(Update process may take up to 15 minutes)

* If "UPDATE SUCCESS" appears, this means your receiver is already up-to-date. In this case, power off to exit from Advanced Setup. Your AV receiver is ready for normal use.

Firmware update in progress



! Caution

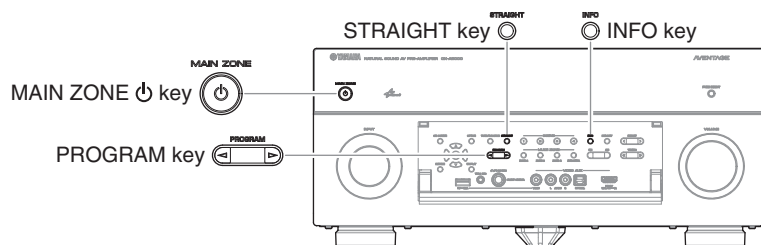
DO NOT interrupt power during the update.

In case the power is accidentally cut off resulting in a condition where you can't recover normal operation, refer to the troubleshooting method (**Troubleshooting CASE 2**) on the last page.

b. When completed, "UPDATE SUCCESS" appears on the display.

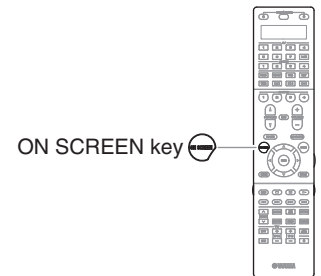


c. Turn off the power of the receiver by pressing the **MAIN ZONE**  key.



5 Check the updated firmware version

- Power on the AV receiver and press the **ON SCREEN** key on the remote control.
- Select "Information" > "System".
- Confirm that the firmware version is updated to the latest version.



Congratulations!

You have completed the firmware update. Your AV receiver is ready for normal use.

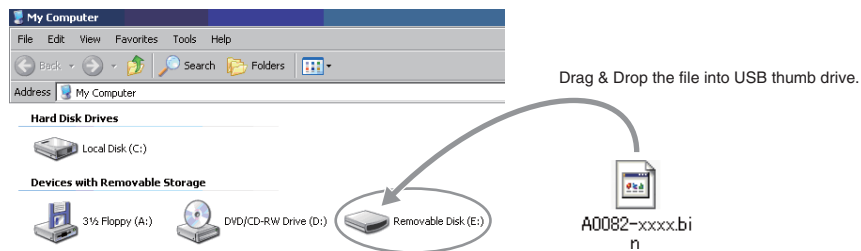
Firmware Update by USB

Requirement: USB thumb drive, with enough free space to store over 25MB.
(File system with FAT16 or FAT32 format)

Firmware file provided by YAMAHA, "A0082-xxxx.bin".

1 Prepare USB thumb drive for the update

Download the firmware, unzip and copy "A0082-xxxx.bin" into the root directory of the USB thumb drive.



2 Power off the receiver (Standby mode)

3 Insert the USB thumb drive

USB port is located at the lower left corner of the front panel.

4 Enter the ADVANCED SETUP mode

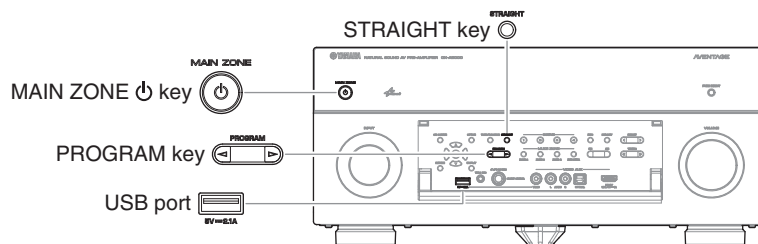
While pressing the **STRAIGHT** key, press the **MAIN ZONE** \odot key and keep **STRAIGHT** key pressed until "ADVANCED SETUP" appears on the front panel display.

ADVANCED SETUP

5 Select firmware update from the menu

Press the **PROGRAM** key until "FIRM UPDATE USB" is displayed.

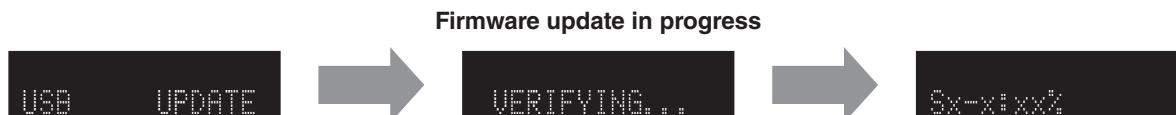
FIRM UPDATE
USB



6 Start firmware update

- Press **INFO** key to start the update.
(Update process may take up to 10 minutes)

* If "UPDATE SUCCESS" appears, this means your receiver is already up-to-date. In this case, power off to exit from Advanced Setup. Your AV receiver is ready for normal use.



! Caution

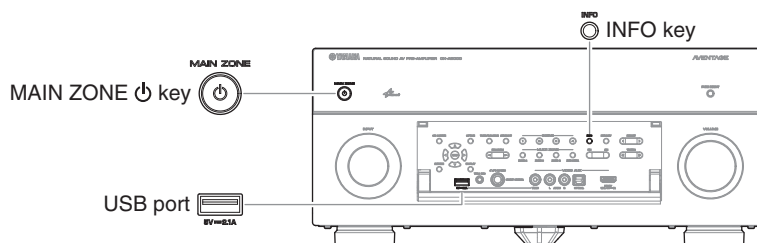
DO NOT interrupt power during the update.

In case the power is accidentally cut off resulting in a condition where you can't recover normal operation, refer to the troubleshooting method (**Troubleshooting CASE 2**) on the last page.

- When completed, "UPDATE SUCCESS" appears on the display.

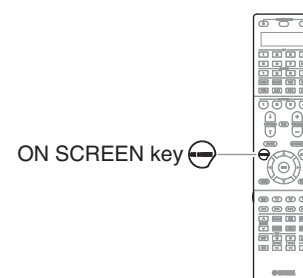


- Turn off the power of the receiver by pressing the **MAIN ZONE** key.



7 Check the updated firmware version

- Power on the AV receiver and press the **ON SCREEN** key on the remote control.
- Select "Information" > "System".
- Confirm that the firmware version is updated to the latest version.



Congratulations!

You have completed the firmware update. Your AV receiver is ready for normal use.

Troubleshooting

CASE 1 Error message appeared during the update

Cause: For some reason, the receiver can't read the firmware data.

Method: For your solution, check the following

[Update through Internet]

- Check Internet connection.
Your Internet connection is working by playing an Internet radio station.
(See owner's manual for details)

[Update by USB thumb drive]

- USB thumb drive is connected properly to the receiver.
- USB thumb drive is not password protected.
(AV receiver cannot read data from a security protected USB thumb drive)
- Make sure the USB thumb drive is inserted before the receiver is powered on for the update.
- The firmware data, A0082-xxxx.bin is stored in the root directory of the USB thumb drive.
- There is no other data except the firmware data in the USB thumb drive.
- No folders are created in the USB thumb drive.
Else, retry the update by USB using another USB thumb drive.

CASE 2 Firmware update doesn't start for other reasons

- Receiver doesn't power up after the update.
- Or, error message appeared when confirming the firmware version.

Recovery method using USB method:

1. Unplug the AC power cable from wall outlet.
2. Insert the USB thumb drive which has the firmware data stored inside, into the USB port located on the front panel.
3. Press and hold the **PURE DIRECT** key and keep it pressed while you plug the AC power cable back into the wall outlet again.
"FIRM UPDATE USB" will appear on the front display. Then, release the **PURE DIRECT** key.
4. The update will start automatically.
5. When "UPDATE SUCCESS" appears on the display, firmware update is completed.
Power off the receiver and remove the USB thumb drive.
6. Confirm updated firmware version.

